



**STIGA**

PARK

VILLA

READY



8211-0209-13

## 1 SAFETY INSTRUCTIONS

### 1.1 GENERAL

- Please read through these instructions carefully. Learn all the controls and the correct use of the machine.
- Before use, all drivers must apply for and receive practical training in the operation of the machine. Particular emphasis should be placed on the fact that:
  - a. The use of ride-on lawnmowers requires care and concentration.
  - b. On slopes, it is not possible to control a sliding ride-on lawnmower by braking. The main reasons for losing control are insufficient traction, excessively high speed, insufficient braking, the machine not being suited to the task, lack of attention to the surface or incorrect use as a towing vehicle.
- Never let children or anyone who is not familiar with these instructions to use the machine. Local regulations may impose restrictions as regards the age of the driver.
- Never use the machine if others, particularly children or animals, are in the vicinity.
- Remember that the driver is responsible for accidents that happen to other people or their property.
- Do not let children or other passengers to ride with you on the machine. They might fall off and be seriously injured, or they might prevent the machine being driven safely.
- Do not use the machine if you are under the influence of alcohol, drugs or medication. Neither should you use it when you are tired or feeling unwell.

### 1.2 PREPARATIONS

- Wear strong shoes and long trousers when using the machine. Do not operate it barefoot or wearing sandals.
- Wear appropriate clothing when using the machine. Do not wear loose, hanging clothes, jewellery, scarves, ties, etc., which can get caught in rotating parts. Tie up long hair.
- Carefully check the area that is to be cut/cleared of snow. Remove all loose stones, sticks, steel wire and other foreign objects which the machine could throw out.
- Warning – Petrol is highly inflammable.
  - a. Always store petrol in containers that are made especially for this purpose.
  - b. Only fill or top up with petrol outdoors, and never smoke when filling or topping up.

- c. Fill with petrol before starting the motor. Never remove the filler cap or fill with petrol while the engine is running or still warm.
  - d. If petrol is spilt, do not try to start the engine but instead move the machine away from the place where the spillage occurred and avoid any possible causes of sparks until the petrol fumes have evaporated.
  - e. Do not forget to screw the cap on the petrol tank and the storage container after filling.
- Replace faulty silencers.
  - Before use, always check that blades and mounting devices are not worn or damaged. Replace worn or damaged parts as a set so that the correct balance is maintained.
  - The battery (on electrically started machines) gives off explosive gases. Keep sparks, flames and cigarettes away. Ensure there is sufficient ventilation during charging.
  - The battery contains toxic material. Do not damage the battery casing. If the casing is damaged, avoid contact with the content of the battery.
  - Do not throw out old, defective batteries with the rubbish. Contact the local authorities for correct waste management.
  - Do not short circuit the battery. Sparks occur which can result in fire.

### 1.3 DRIVING

- Start the engine according to the instructions in the user guide. Keep your feet away from the blades.
- Do not run the engine in confined areas where hazardous carbon monoxide gases can collect.
- Only use the machine in daylight or where there is good lighting.
- Always use hearing protectors.
- Take care when approaching obstacles which obscure your vision.
- Always keep children away from the machine's working area. Get another adult to keep the children under supervision.
- Take care when reversing. Look behind you both before and during reversing to check for any obstacles. Look out for small children.
- Disengage the blade(s) and the connection before starting the engine.
- Never have your hands or feet near or under rotating parts. Watch out for the blades. Do not stand right in front of the discharge opening.
- Avoid using the machine on wet lawns.

- Be careful when driving on slopes. No sudden starting or stopping when moving up or down a slope.
- Release the clutch pedal slowly. Always drive with the gear engaged, and do not disengage when driving down slopes.
- Never cut across a slope. Move from the top down, and from the bottom to the top.
- Use low acceleration when engaging the drive, especially in long grass. Reduce the speed on slopes and when making sharp turns to prevent the machine from tipping over or you losing control of the machine.
- Watch out for holes in the ground and other hidden dangers.
- Do not drive too near ditches or high edges. The machine can turn over if a wheel drives over the edge or the edge breaks.
- Take care when towing and when using heavy equipment.
  - a. Only use an approved towing device.
  - b. Limit the load so that it can be controlled safely.
  - c. Do not make any sudden turns. Take care when reversing.
  - d. Use wheel weights or front weight when recommended in the user instructions.
- Look out for traffic at crossings or when driving near roads.
- Stop the blade(s) when crossing a surface other than grass during mowing.
- When using any of the accessories, never direct the discharge at somebody standing beside it, and do not allow anyone to stand near the machine when it is running.
- Never operate the machine with insufficient protection or without the safety devices in place.
- Existing safety devices may not be disconnected or disengaged. Check that the safety devices work each time before using the machine.
- Do not alter the engine's regulator setting and do not race the engine. The danger of personal injury increases when the engine is run at high revs.
- Do not touch engine components which become warm during use. Risk of burn injuries.
- Do not leave the driving seat without:
  - a. Disengaging the power take-off and lowering the accessories.
  - b. Putting the gear in neutral and activating the parking brake.
  - c. Stopping the engine and removing the key.
- Only use accessories that are approved by the machine's manufacturer.
- The machine may not be used without accessories/tools being installed in the machine's tool mounts. Driving without accessories can have a negative effect on the stability of the machine.
- Take care when using grass collectors and other accessories. These can alter the machine's stability. Particularly on slopes.
- Disengage the drive to the accessories, shut off the engine and disconnect the spark plug cable or remove the starter key:
  - a. To remove sticks and rubbish or when the discharge has become clogged.
  - b. To check, clean or service the machine.
  - c. To check whether damage has occurred and to carry out any repairs before starting and using the machine again after a collision with a foreign object.
  - d. To check the machine if it begins to vibrate excessively. (Check immediately).
- Disengage the drive to accessories during transport or when the machine is not in use.
- Shut off the engine and disconnect the drive to the accessories:
  - a. Before filling with petrol.
  - b. Before removing the grass collector.
  - c. Before adjusting the height setting, assuming this cannot be done from the driver's position.
- Reduce the acceleration when the engine is to be stopped, and if the engine is equipped with a fuel shut-off valve, this should be switched off when the work is finished.
- Take care with multiple blade decks as one rotating blade can cause other blades to rotate.
- The machine, equipped with original accessories, must not be driven in any direction on slopes with a gradient greater than 10°.
- The cutting deck's original blade(s) may not be replaced with non-original devices intended for e.g. moss scarification. If such devices are used, the guarantee will cease to be valid. There is also a risk of serious injury or damage to people or property.
- Take care when unloading and loading the machine onto a trailer or lorry.

#### 1.4 MAINTENANCE AND STORAGE

- Tighten all nuts and screws so that the machine is in safe working condition.
- At regular intervals check that the cutting deck's blade screw(s) are properly tightened.
- Regularly check the operation of the brakes. It

is important to maintain and repair the brakes if necessary.

- Never store the machine with petrol in the tank in buildings where the fumes can come into contact with open flames or sparks.
- Allow the engine to cool before placing the machine in a store.
- To reduce the risk of fire, keep the engine, silencer, battery and petrol tank free from grass, leaves and surplus oil.
- Check frequently whether there is any wear or damage to the grass collector.
- For the sake of safety, replace worn or damaged parts.
- Always use genuine spare parts. Non-genuine spare parts can entail a risk of injury, even if they fit the machine.
- Replace damaged warning and instruction stickers.
- If there is no mechanical lock for the transport position, the cutting deck must be lowered when parked, stored or when the machine is left unsupervised.
- If the petrol tank is to be emptied, this must take place outdoors.
- Store the machine so that children cannot get to it.
- The battery contains acid. In the event of mechanical damage or overcharging, acid can leak out.
- Never overcharge the battery. Overcharging can cause the battery to explode, throwing the acid in all directions.
- If acid comes into contact with the eyes or skin, this can cause serious injuries. If any part of the body has come into contact with acid, rinse immediately with copious amounts of water and seek medical assistance as soon as possible.
- Fumes from acid that are inhaled cause damage to mucous membranes and other internal organs. Seek medical assistance if acid fumes have been inhaled.
- Acid causes serious damage to tools, clothes and other material. Rinse away spilled acid immediately with water.
- Do not short circuit the battery's terminals. Sparks occur which can result in fire. Do not wear metal jewellery which can come into contact with the battery terminals.
- In the event of damage to the battery casing, cover, terminals or interference to the strip covering the valves, the battery should be replaced.

## 2 STORAGE

Empty the petrol tank. Start the engine and let it run until it stops.

Replace the oil while the engine is still warm.

Unscrew the spark plug and pour a tablespoonful of oil into the cylinder. Rotate the engine a few turns so that the oil is distributed in the cylinder. Install the spark plug.

Clean the entire machine. It is particularly important to clean under the cutting deck. Touch up paint damage to prevent rust.

Store the machine indoors in a dry place.

Machines with an electric starter:

Remove the battery. Store it well charged in a cool place (between 0°C and +15°C).

At the correct storage temperature, the battery should be maintenance-charged every four months.



**The battery acid is extremely corrosive and can cause injuries and damage to skin and clothing. Always use rubber gloves and glasses (goggles) to protect your eyes. Avoid inhaling any acid vapour.**



**Do not incline the battery too much so that the battery acid can run out onto hands or clothing. If this should happen, rinse with plenty of water.**

## 3 SERVICE

Authorised service workshops carry out repairs and guarantee service. They use original spare parts.

**STIGA original spare parts and accessories are designed specifically for STIGA machines. Please note that 'non-original' spare parts and accessories have not been checked or approved by STIGA.**



**The use of such parts and accessories can affect the function and safety of the machine. STIGA accepts no responsibility for damage or injuries caused by such products.**

Original spare parts are supplied by service workshops and by many dealers.

A list of these can be found on STIGA's Internet website at: [www.stiga.com](http://www.stiga.com).

We recommend that the machine be handed in to an authorised service workshop for service, maintenance and checking of the safety devices once a year.

## 4 PURCHASE TERMS

A full guarantee is issued against manufacturing and material defects. The user must carefully follow the instructions given in the enclosed documentation.

### Guarantee period

For consumer use: two years from purchase date.  
For professional use: 300 hours or three months, whichever comes first.

For Stiga Park and Stiga Villa, it is possible to have a one year extension to the guarantee if the conditions in the service book are satisfied.

For batteries: six months from the purchase date.

### Exceptions

The guarantee does not cover damage due to:

- neglect of the user to acquaint himself with accompanying documentation
- carelessness
- incorrect and non-permitted use or assembly
- the use of non-genuine spare parts
- the use of accessories not supplied or approved by Stiga

Neither does the guarantee cover:

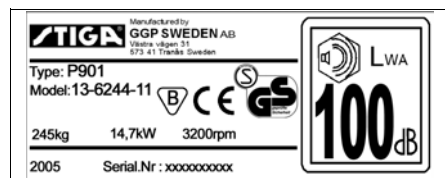
- wearing components such as blades, belts, wheels and cables
- normal wear
- engine and transmission. These are covered by the appropriate manufacturer's guarantees with separate terms and conditions.

The purchaser is covered by each country's national laws. The rights to which the purchaser is entitled with the support of these laws are not restricted by this guarantee.

## 5 PRODUCT IDENTITY

The identity of the product is determined by two parts:

### 1. The machine's item and serial numbers:



### 2. The engine's model, type and serial numbers:

Use these identification terms during all contact with service workshops and when purchasing spare parts.

As soon as possible after acquiring the machine, the above number should be written in on the last page of this publication.

## 6 ENVIRONMENT

For environmental reasons, we recommend that particular attention is given to the following points:

- Always use Alkylate petrol ("Environmental petrol").
- Always use a funnel and/or a petrol can with overfill protection to avoid spillage when filling with petrol.
- Do not fill the petrol tank right to the top.
- Do not fill too much engine and/or transmission oil (see user instructions for the correct amount).
- Collect up all oil during oil changes. Do not spill any. Hand in the oil to a recycling station.
- Do not discard replaced oil filters with normal rubbish. Hand them in to a recycling station.
- Do not discard replaced lead batteries with normal rubbish. Hand in to a battery collection point for recycling.
- Replace the silencer if it is broken. Always use original spare parts when carrying out repairs.
- If the machine was originally equipped with a catalytic converter and this is broken, a new catalytic converter must be installed after removing the old one.
- Always get a specialist to adjust the carburettor if necessary.
- Clean the air filter according to the instructions given (see user instructions).

## 7 INSURE YOUR RIDE-ON LAWNMOWER

Check the insurance for your new ride-on lawnmower. Contact your insurance company. You ought to have fully comprehensive insurance for traffic, fire, damage and theft.

*GGP reserves the right to make alterations to the product without prior notification.*

**1 IMPORTANT****Safe Practice for Ride-On Mowers  
(ANSI B71.1 - 2003)**

**This cutting machine is capable of amputating hands and feet and throwing objects. Failure to observe the following safety instructions could result in serious injury or death.**

**1.1 General operation**

1. Read, understand, and follow all instructions on the machine and the manual(s) before starting.
2. Do not put hands or feet near the rotating parts or under the machine. Keep clear of the discharge opening at all times.
3. Only allow responsible adults, who are familiar with the instructions, to operate this machine.
4. Clear the area of objects such as rocks, wire, toys, etc., which could be thrown by the blade(s).
5. Be sure the area is clear of bystanders before operating. Stop the machine if anyone enters the area.
6. Never carry passengers.
7. Do not mow in reverse unless absolutely necessary. Always look down and behind before and while backing.
8. Never direct discharge material toward anyone. Avoid discharging material against a wall or obstruction. Material may ricochet back toward the operator. Stop the blade(s) when crossing gravel surfaces.
9. Do not operate machine without the entire grass catcher, discharge guard, or other safety devices in place and working.
10. Slow down before turning.
11. Never leave a running machine unattended. Always turn off blade(s), set parking brake, stop engine and remove key before dismounting.
12. Disengage blade(s) when not mowing. Shut off engine and wait for all parts to come to a complete stop before cleaning the machine, removing the grass catcher, or unclogging the discharge guard.
13. Operate machine only in daylight or good artificial light.
14. Do not operate machine while under the influence of alcohol or drugs.
15. Watch for traffic when operating near or crossing roadways.
16. Use extra care when loading or unloading the machine into a trailer or truck.

17. Always wear eye protection when operating the machine.
18. Data indicates operators 60 years and above are involved in a large percentage of riding mower-related injuries. These operators should evaluate their ability to operate the riding mower safely enough to protect themselves and others from serious injury.
19. Follow the manufacturer's recommendation for wheel weights or counterweights.

**1.2 Slope operation**

Slopes are a major factor related to loss of control and tip-over accidents, which can result in severe injury or death. Operation on all slopes requires extra caution. If you cannot back up the slope or if you feel uneasy on it, do not mow it.

1. Mow up and down slopes, not across.
2. Watch for holes, ruts, bumps, rocks, or other hidden objects. Uneven terrain could overturn the machine. Tall grass can hide obstacles.
3. Choose a low ground speed so you will not have to stop or shift while on a slope.
4. Do not mow on wet grass. Tires may lose traction.
5. Always keep the machine in gear when going down slopes. Do not shift to neutral and coast downhill.
6. Avoid starting, stopping, or turning on a slope. If the tires lose traction, disengage the blade(s) and proceed slowly straight down the slope.
7. Keep all movement on slopes slow and gradual. Do not make sudden changes in speed or direction, which could cause the machine to roll over.
8. Use extra care while operating machine with grass catchers or other attachments; they can affect the stability of the machine. Do not use on steep slopes.
9. Do not try to stabilize the machine by putting your foot in the ground.
10. Do not mow near drop-offs, ditches or embankments. The machine could suddenly roll over if a wheel goes over the edge or if the edge caves in.

**1.3 Children**

Tragic accidents can occur if the operator is not alert to the presence of children. Children are often attracted to the machine and mowing activity. Never assume that children will remain where you last saw them.

1. Keep children out of the mowing area and in the watchful care of a responsible adult other than the operator.
2. Be alert and turn machine off if a child enters the area.

## ANSI B71.1-2003

3. Before and while backing, look behind and down for small children.
4. Never carry children, even with the blade(s) shut off. They may fall off and be seriously injured or interfere with safe machine operation. Children who have been given rides in the past may suddenly appear in the mowing area for another ride and be run over or backed over by the machine.
5. Never allow children to operate the machine.
6. Use extreme care when approaching blind corners, shrubs, trees, or other objects that may block your view of a child.

### 1.4 Towing

1. Tow only with a machine that has a hitch designed for towing. Do not attach towed equipment except at hitch point.
2. Follow the manufacturer's recommendation for weight limits for towed equipment and towing on slopes.
3. Never allow children or others in or on towed equipment.
4. On slopes, the weight of the towed equipment may cause loss of traction and loss of control.
5. Travel slowly and allow extra distance to stop.

### 1.5 Service

#### 1.5.1 Safe handling of gasoline

To avoid personal injury or property damage, use extreme care in handling gasoline. Gasoline is extremely flammable and the vapors are explosive.

1. Extinguish all cigarettes, cigars, pipes, and other sources of ignition.
2. Use only an approved gasoline container.
3. Never remove gas cap or add fuel with the engine running. Allow engine to cool before refueling.
4. Never fuel the machine indoors.
5. Never store the machine or fuel container where there is an open flame, spark, or pilot light such as on a water heater or other appliances.
6. Never fill containers inside a vehicle or on a truck or trailer bed with a plastic liner. Always place containers on the ground away from your vehicle before filling.
7. Remove gas-powered equipment from the truck or trailer and refuel it on the ground. If this is not possible, then refuel such equipment with a portable container, rather than from a gasoline dispenser nozzle.
8. Keep the nozzle in contact with the rim of the fuel tank or container opening at all times until the fueling is complete. Do not use a nozzle lock-open device.

9. If fuel is spilled on clothing, change clothing immediately.
10. Never overfill fuel tank. Replace gas cap and tighten securely.

#### 1.5.2 General service

1. Never operate machine in closed area.
2. Keep all nuts and bolts tight to be sure the equipment is in safe working condition.
3. Never tamper with safety devices. Check their proper operation regularly.
4. Keep machine free of grass, leaves, or other debris build-up. Clean up oil or fuel spillage and remove any fuel-soaked debris. Allow machine to cool before storing.
5. If you strike a foreign object, stop and inspect the machine. Repair, if necessary, before restarting.
6. Never make any adjustments or repairs with the engine running.
7. Check grass catcher components and the discharge guard frequently and replace with manufacturer's recommended parts, when necessary.
8. Mower blades are sharp. Wrap the blade or wear gloves, and use extra caution when servicing them.
9. Check brake operation frequently. Adjust and service as required.
10. Maintain or replace safety and instruction labels, as necessary.



[www.stiga.com](http://www.stiga.com)

GGP Sweden AB · Box 1006 · SE-573 28 TRANÅS